

# M-F3

## 配件说明 Accessories



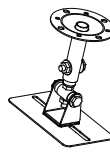
**3/8" Adaptor**  
3/8" 转接头  
3/8" Adaptor



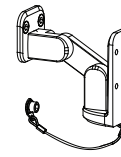
**SPS 20**  
M20 支撑杆  
M20 Pole support



**M-F3 LC**  
M-F3 连接片  
M-F3 Link connector



**CM**  
卡盘  
Ceiling mount



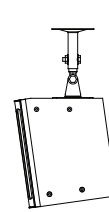
**SMB**  
SMB 铝支架  
Smart-mounting-bracket

SE 2019/03 1000

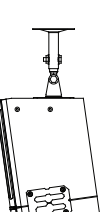
## 使用说明 Operation options

### 1. 吊挂 Flying

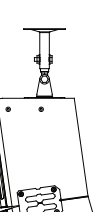
BS 8



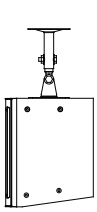
BD 8



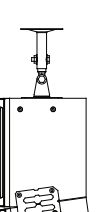
BD 816



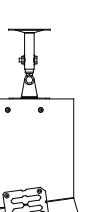
TS 0



TD 08

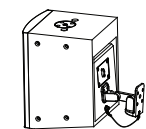
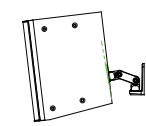


TD 016



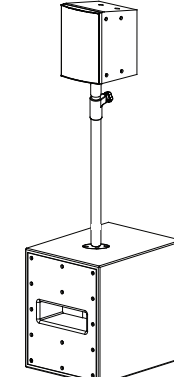
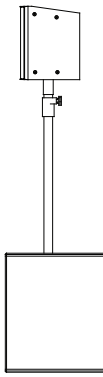
Note:  
T-top mounting  
B-bottom mounting  
S-single box  
D-dual boxes  
0 / 8 / 16 - Angle

### 2. 墙挂 Wall mounting



M-F3 sat 1只/PC  
SMB 1副/PC

### 3. 地面支撑 Ground stacking



M-F3 sat 1只/PC  
M-F3 sub 1只/PC  
3/8" Adaptor 1只/PC  
SPS 20 1只/PC



# 还原真声

Pristine Acoustic Reproduction

# 岂止于小

Ultra-Compact Design



Hotline: +86 400 109 1122  
Fax: +86 573 8911 9916  
Website: www.se-audiotechnik.com



美高微信



美高官网



## 还原真声，岂止于小

### 2.1有源阵列扩声系统

Pristine acoustic reproduction, ultra-compact design  
2.1 active array system

M-F3是一款紧凑型模块化的有源“多合一”扩声系统。该系统基本配置为一只有源2×10”超低，一台1.5U功放和两只有源全频阵列音箱构成。

M-F3全频音箱只有A4打印纸大小，极易隐藏，由于采用了线阵列原理，声音能量充足，可单只使用，也可以多只组合形成线性阵列音箱系统。

该系统配套功放内置DSP，同时具有抑制啸叫及高频增益功能，方便调试声场复杂的环境。

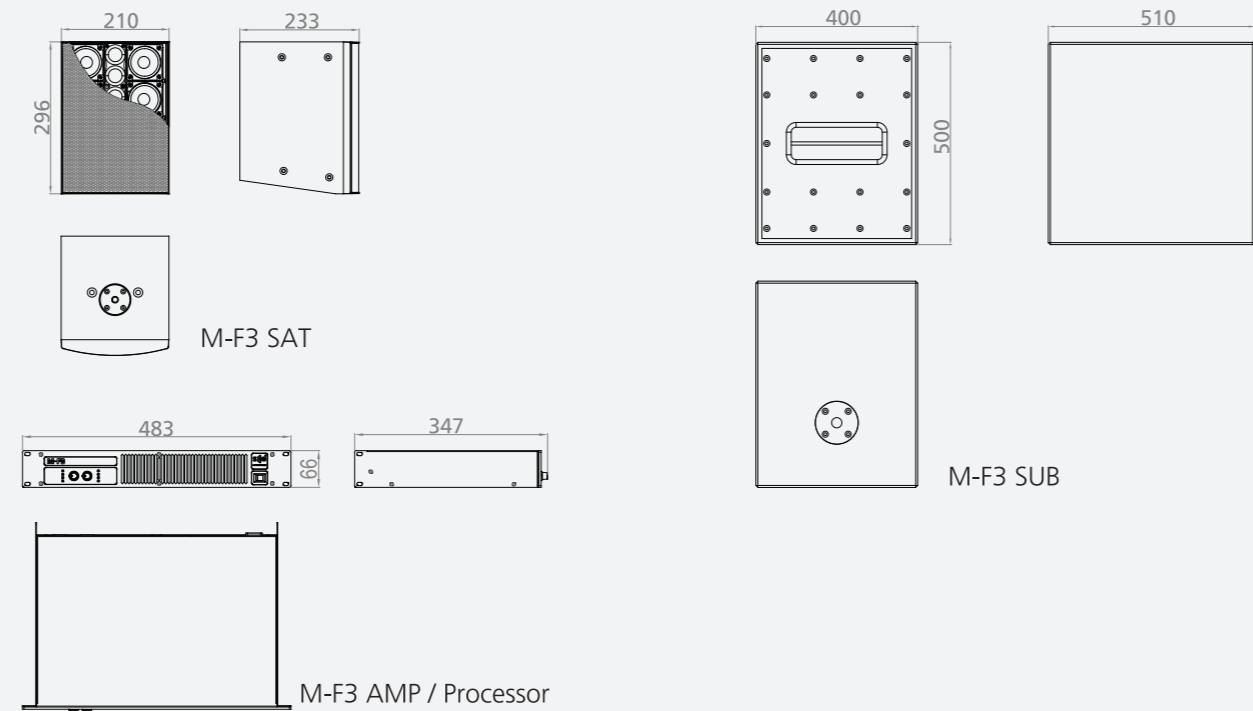
M-F3 is a compact and modular active all-in-one array system which is composed of a double 10” active sub, a four-channel amplifier & signal processor and two passive full range speakers.

Although being of small size, this system provides high power output by adopting line array principles. A single full range unit can be used independently, a combination of speakers can be used to form a line array system.

With built-in DSP, feedback destroy and high shelf filter, the amplifier has the ability to conduct tuning and feedback suppression in complex environments.



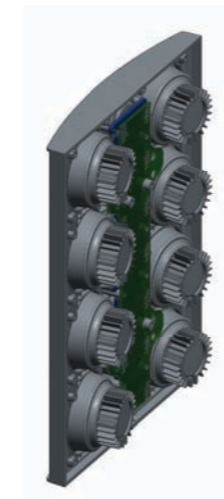
结构图 Structural diagram



### 1 小身材，大声压 Small size, high SPL

M-F3正面只有A4打印纸大小，重量5.5 kg/只，高品质的扬声器单元和先进的散热技术使得系统从而输出更大的声压级。

M-F3 is a compact and lightweight array speaker that has the same frontal measurements as a sheet of A4 paper and a weight of only 5.5 kg. Advanced cooling and venting measures keep power compression at a minimum.

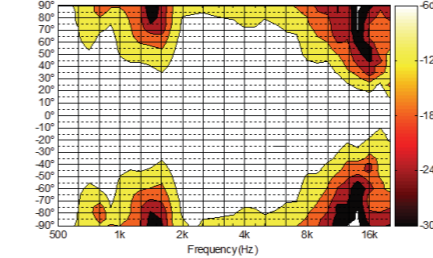


### 3 线声源 Line source

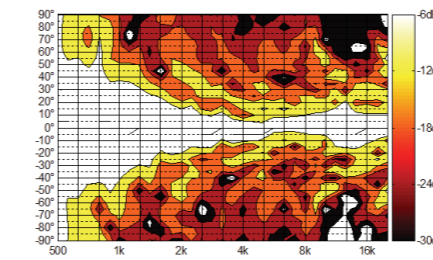
扬声器单元紧凑排列，以改善垂直和水平方向的声场扩散。正面反射减少，水平声音性能非常稳定、平滑。单只M-F3已经是一个线阵列。

Each unit is already a line array in itself with very wide horizontal and precisely controlled vertical dispersion.

单只水平指向 Horizontal dispersion (-6dB) : 120°



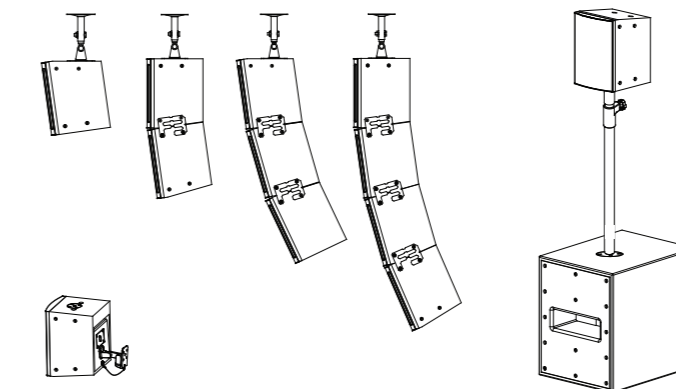
单只垂直指向 Vertical dispersion (-6dB) : 16°



### 4 灵活多变 Versatile mounting

线声源音箱，体积小，重量轻，具有14个吊挂点，1个支撑座。通过选配部件，可以重现多种形式吊挂、壁挂和地面支撑。

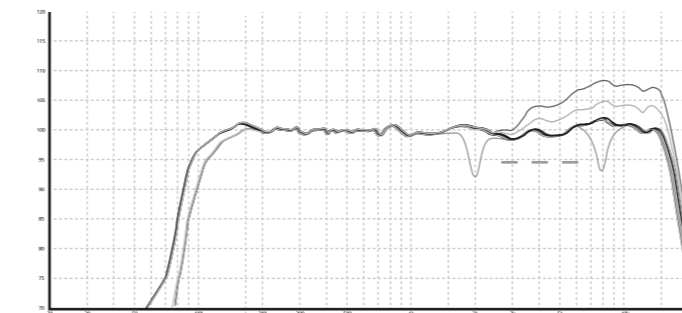
Due to its light weight, 14 rigging points and a supporting base, M-F3 can be set up in flying, wall mounting or ground stacking mode to meet the demands of various application environments.



### 2 DSP功放护航 Amplifier & Signal processor

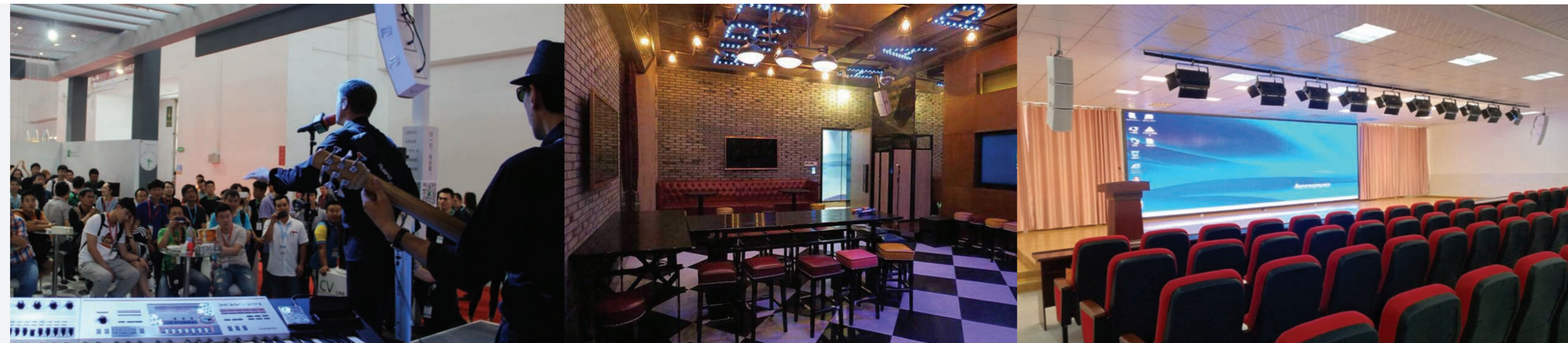
配套Class-D功放内置精准调试的DSP，确保系统在安全稳定的运行状态下输出完美音效。同时具有Feedback destroy开关及频率旋钮，High shelf旋钮功能，方便调试声场复杂的环境，抑制啸叫等。

With built-in DSP, feedback destroy and high shelf filter, the Class-D amplifier has the ability to conduct tuning and feedback suppression in complex environments.



### 应用场 Application

- 会议室 · Meeting rooms
- 多功能厅 · Multi-media rooms
- 娱乐场所 · KTV
- 礼堂 · Auditorium
- 教堂 · Church



### 参数规格 Specification

型号名称: <b>M-F3</b>	Model: <b>M-F3</b>
<b>M-F3 全频音箱</b>	<b>M-F3 SAT</b>
类型: 2.8” 倒相式	Type: 2.8” bassreflex
频响范围(-6 dB): 120 Hz - 18 kHz	Frequency response (-6 dB): 120 Hz - 18 kHz
功率(RMS): 200 W	Power handling (RMS): 200 W
灵敏度(1 W / 1 m): 100 dB	Sensitivity (1 W / 1 m): 100 dB
最大声压级(1m) : 126dB 峰值声压级 <sup>1</sup>	MAX SPL (1m) : 126 dB peak <sup>1</sup>
最大吊挂数量(12倍安全系数, 使用s  e原厂附件): 4 只	Max. Qty of rigging (12: 1 Safety factor, using s  e original accessories): 4 pcs
指向角度 (H × V): 120° × 16°	Dispersion(H × V): 120° × 16°
扬声器单元中音: 8 × 2.8” 钹磁单元, 带冷却模块, 0.75” 音圈	Transducer MF: 8x 2.8”, neodymium magnet with cooling module, 0.75” voice coil
扬声器单元高音: 7 × 1”钹磁单丝膜高音, 1”音圈	Transducer HF: 7x 1”, neodymium magnet, 1” voice coil
输入: 1 × Neutrik NL-4	Input: 1x Neutrik NL-4
箱体材料/喷漆: 12 mm MDF, 白色PU漫点漆	Cabinet / Coating: 12 mm MDF, white PU texture coating
尺寸 (W × H × D): 210 × 296 × 233 mm	Dimensions (W × H × D): 210 × 296 × 233 mm
重量: 5.5 kg + 5.5 kg	Weight: 5.5 kg + 5.5 kg
1. 使用12 dB峰值因子粉噪信号测试得到, 全空. 原画册中128 dB 为计算所得.	
<b>M-F3 超低音</b>	<b>M-F3 SUB</b>
类型: 10” V型带通式	Type: 10” V construction, bandpass
频响范围(-6 dB): 46 Hz - 180 Hz	Frequency response (-6 dB): 46 Hz - 180 Hz
功率(RMS): 400 W	Power output (RMS): 400 W
最大声压级(1 m): 129 dB	Max. SPL (1 m): 129 dB
扬声器单元低音: 2 × 10”铁氧体单元, 2”音圈	Transducer LF: 2 × 10”, ferrite magnet, 2” voice coil
功放类型: Class D功放, SMPS电源	Power amplifier type: Class D amplifier, SMPS
输入灵敏度: -18 dBV	Input sensitivity: -18 dBV
信号处理: DSP, 48 kHz, 24 bits	Signal processing: DSP, 48 kHz, 24 bits
保护: 多重限幅, 短路, 热保护	Protection: Multiple limiter, short circuit, overheating
控制: On / Off 开关, 超低音音量旋钮, 低通滤波旋钮, 0°- 180°相位拨动开关	Controls: On / Off switch, sub level, low pass frequency knob, 0°- 180° phase switch
指示灯: 电源指示, 信号指示, 限幅指示, 保护指示	Indicators: On, signal, limit, protect
输入/输出接口: Input XLR / Router-output XLR	Line Input / Output: Input XLR / Router-output XLR
箱体材料/喷漆: 15 mm 多层板, 黑色聚氨酯漆	Cabinet / Coating: 15 mm plywood, black polyurea coating
尺寸 (W × H × D): 400 × 500 × 510 mm	Dimensions (W × H × D): 400 × 500 × 510 mm
重量: 25 kg	Weight: 25 kg
1. measured with 12 dB Crest Factor Pink Noise, half space.	
<b>M-F3 功放</b>	<b>M-F3 AMP</b>
功放类型: Class D功放, SMPS电源	Power amplifier type: Class D amplifier, SMPS
功率(RMS): 800 W (200 W + 200 W × 2)	Power output (RMS): 800 W (200 W + 200 W × 2)
输入灵敏度: -4 dBV	Input sensitivity: -4 dBV
信号处理: DSP, 48 kHz, 24 bits	Signal processing: DSP, 48 kHz, 24 bits
保护: 多重限幅, 短路, 热保护	Protection: Multiple limiter, short circuit, overheating
控制: On / Off 开关, 总音量, Full / SAT 开关, 防啸叫开关, 陷波频率旋钮, 高频提升旋钮	Controls: On / Off switch, main level, full / SAT switch, feedback destroy switch, feedback destroy knob, high shelf knob
指示灯: 电源指示, 信号指示, 限幅指示, 保护指示	Indicators: On, signal, limit, protect
输入 / 输出接口: Input XLR / Router-output XLR, speaker out Neutrik NL-4	Line Input / Output: Input XLR / Router-output XLR, speaker out Neutrik NL-4
尺寸 (W × H × D): 483 × 66 × 347 mm	Dimensions (W × H × D): 483 × 66 × 347 mm
重量: 6.5 kg	Weight: 6.5 kg
M-F3功放只能和M-F3全频音箱一起使用。	
M-F3 AMP only can be used for the M-F3 SAT.	